

Chara Navi
(Originator Animal Fortune-Telling by CharaNav)
For iPhone

O p e r a t i o n M a n u a l

CYVERVISION CD.,LTD

Introduction

This manual that written for "CharaNavi For iPhone" for a description of the operation

CharaNavi briefly introduce.

CharaNavi is a fun way to find out yourself, and how you get along with others. Based on Chinese fortune-telling dating back 4000 years, and modern day psychology, CharaNavi tells you exactly which one of the 60 types of personalities you are.

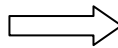
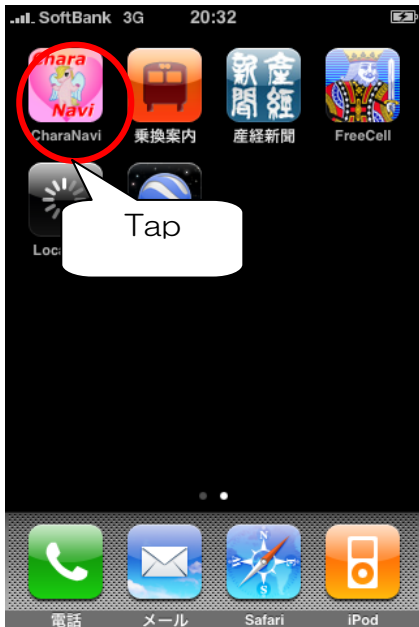
CharaNavi will not only tell you about yourself, and what character type your friends are , but will also tell you if a "match" was really made in heaven. With CharaNavi, it is easy to find out if your personality-type works well with members of the opposite sex (for romance), or with office-mates (for business)! So, if you are ever in doubt about a co-worker, or want to know what your chances are with a date, it's time to CharaNavi.

C o n t e n t s

1. To Start Chara Navi For iPhone.....	1
2. Menu	2
3. User Name.....	3
3-1. Register User Name.....	3
3-2. Edit User Name.....	5
3-2. Delete User Name	6
4. Group.....	7
4-1. Register Group.....	7
4-2. Edit Group.....	8
4-3. Delete Group.....	9
5. Core Nature	10
5-1. Display of Action Pattern	11
5-2. Display of Thought Pattern.....	11
5-3. Display of Mental Vector	12
5-4. Display of Rhythm.....	12
5-5. Display of Rhythm Graph.....	13
6. Relation Ship.....	14
6-1. User Selection.....	14
7. User Information	15
8. About.....	15

1. To Start Chara Navi For iPhone

Chara Navi For iPhone To Start, as well as other iPhone applications, tap the ICON.
1 to 2 seconds after the startup screen.
Menu screen is displayed.



[Startup Screen]

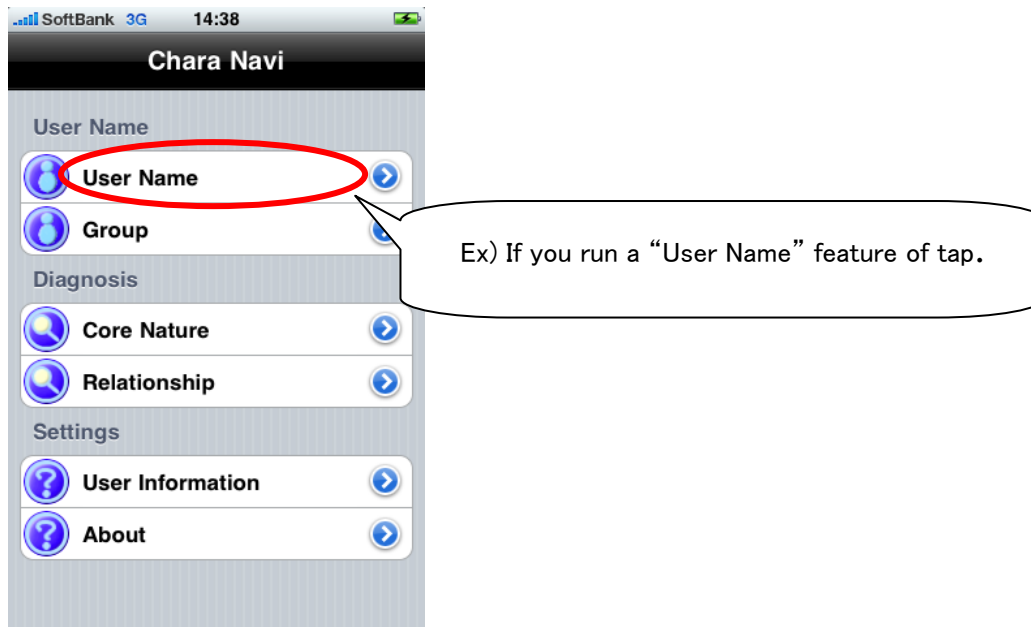


[Menu]

2. Menu

Chara Navi For iPhone have 5 Menu. *1

To perform each function, tap the appropriate menu.



Outline or each function

Menu	Outline of function
User Name	Performs the registration/Update/Delete of User Information.
Group	Performs the registration/Update/Delete of Group Information.
Core Nature	Display the nature of the diagnosis. The performances are also displayed rhythmic chart. *2
Relationship	The chemistry between the diagnostic display.
User Information	Register the information of the buyer. The registration information will be used as other diagnostic and Information.
About	Displays version information. *3

*1: Light Version isn't displayed in the Group Menu.

*2: Light Version don't display Rhythm Graph.

*3: Light version is displayed in the "App Store" button.

3. User Name

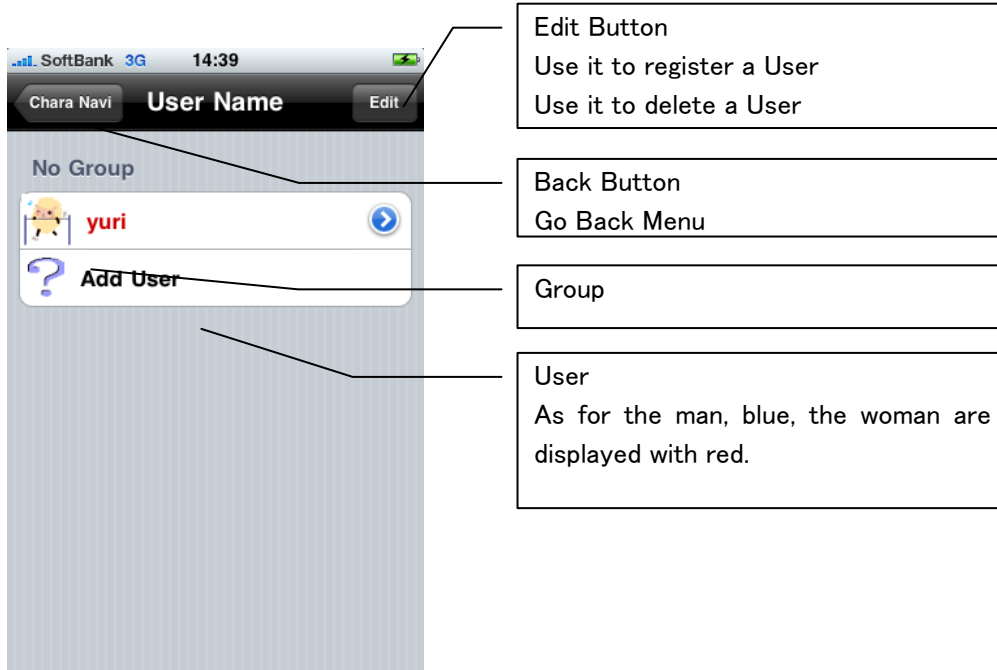
Performs the registration of User Information.

Performs correction of User Information.

Performs the deletion of User Information.

The diagnosis is listed in each group.

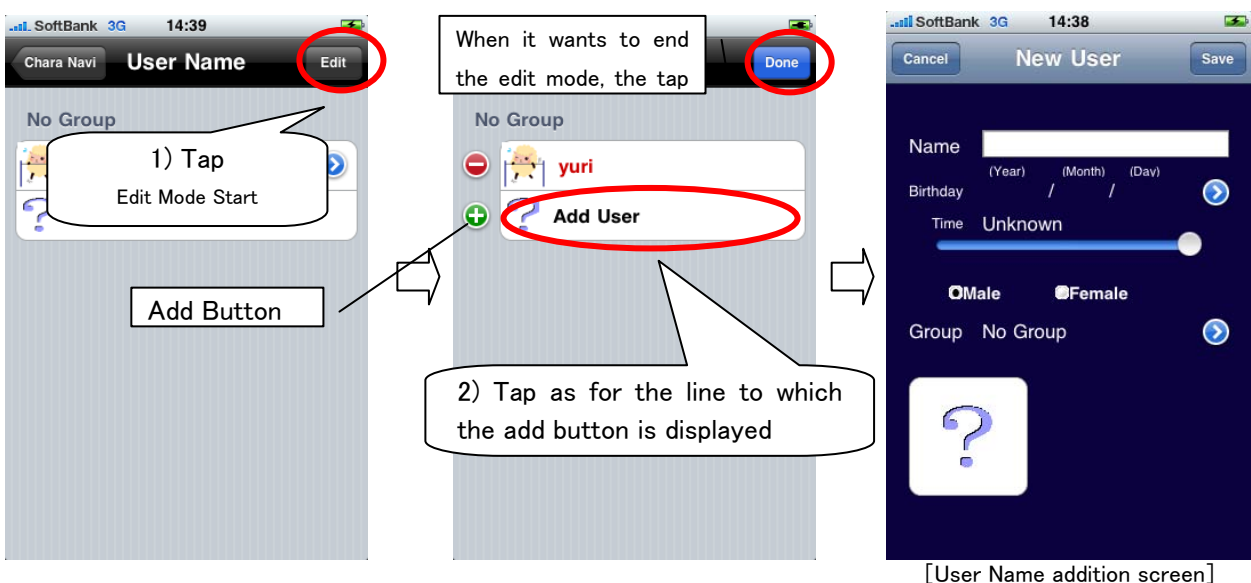
* The Light Version can registre Only One User

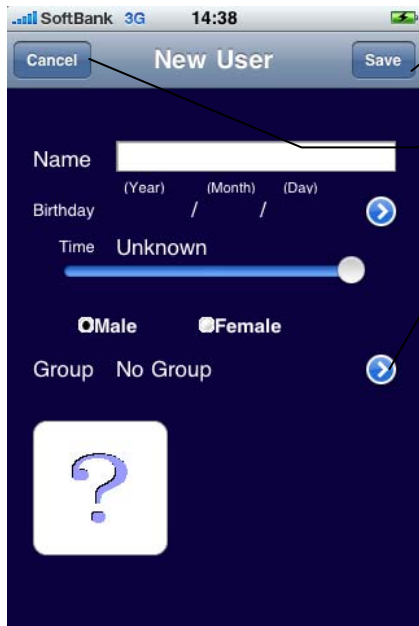


3-1. Register User Name

It registers according to the following procedure of User Name.

1. Tap [Edit]Button : The add button is displayed at the end of the list.
2. Tap as for the line to which the add button is displayed. : User Name addition screen is displayed.





Save Button
The content of the input is preserved.

Cancel Button
Additional processing is canceled.

Select Group Button
Group Selection screen is displayed.

[User Name addition screen]

Explanation of Each Item

Item	Explanation
Name	It is not omissible.
Birth Day	It is not omissible. Is the range of the birthday's Year that can be diagnosed 1905 To 2015.
Biirth Time	Set unknown when not understanding.. Set it by using Slider if you know Birth Time.
Sex	It is not omissible.
Group	The group selection button is done in the tap when the group is set, the group selection screen is displayed, and the group is selected.



3-2. Edit User Name

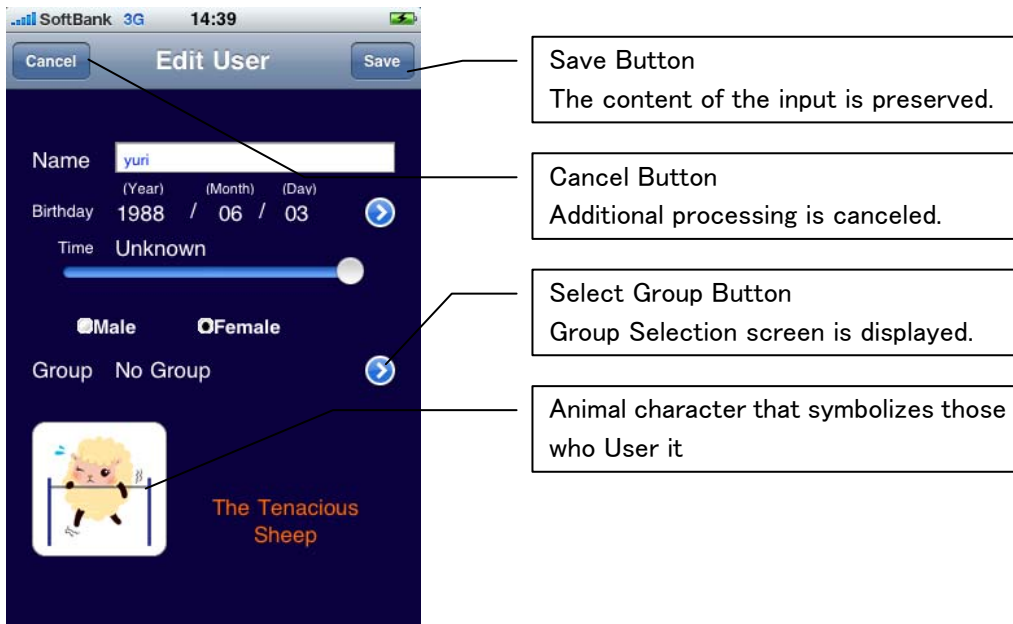
When User Name is edited, it does according to the following procedures.

1. Tap as for the line to which wanting the edited. : User Name Edit screen is displayed.



[User Name edit screen]

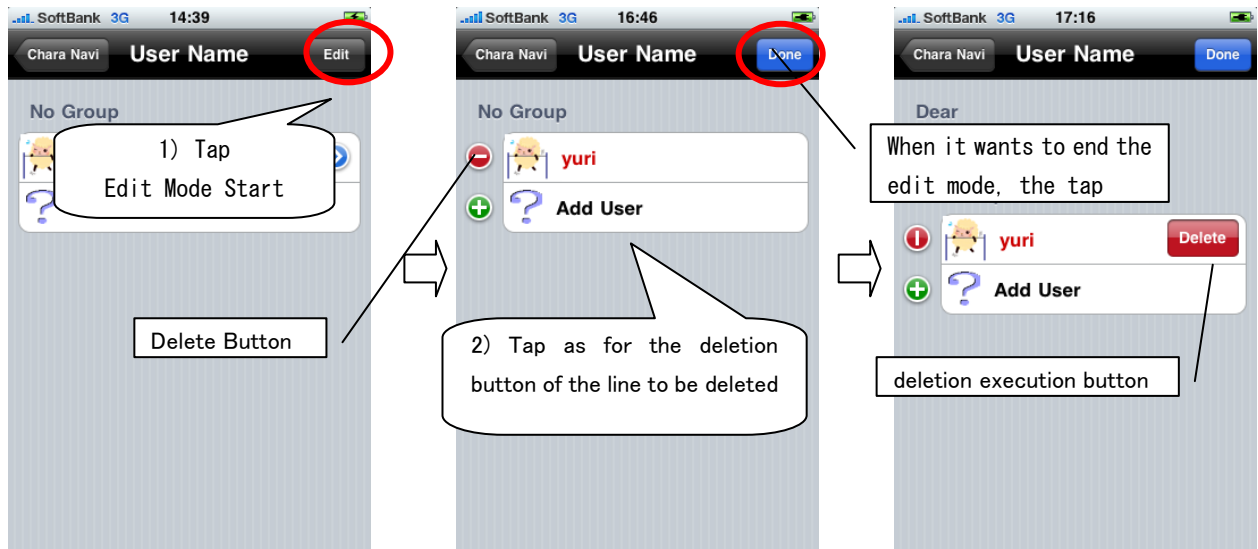
The edit screen is same as additional screen.



3-2. Delete User Name

It deletes it according to the following procedure of User Name.

1. Tap [Edit Button] : The deletion button is displayed.
2. Tap as for the deletion button of the line to be deleted.:The deletion execution button is displayed.
3. Tap The deletion execution button.



4. Group

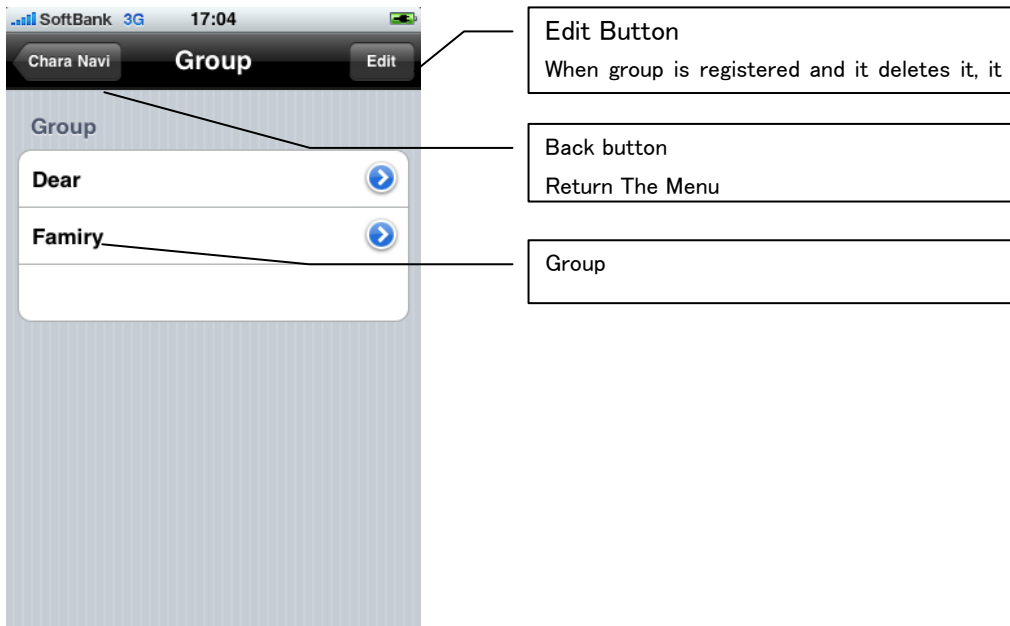
Performs the registration of Group Information.

Performs correction of Group Information.

Performs the deletion of Group Information.

It uses it for User Name's grouping.

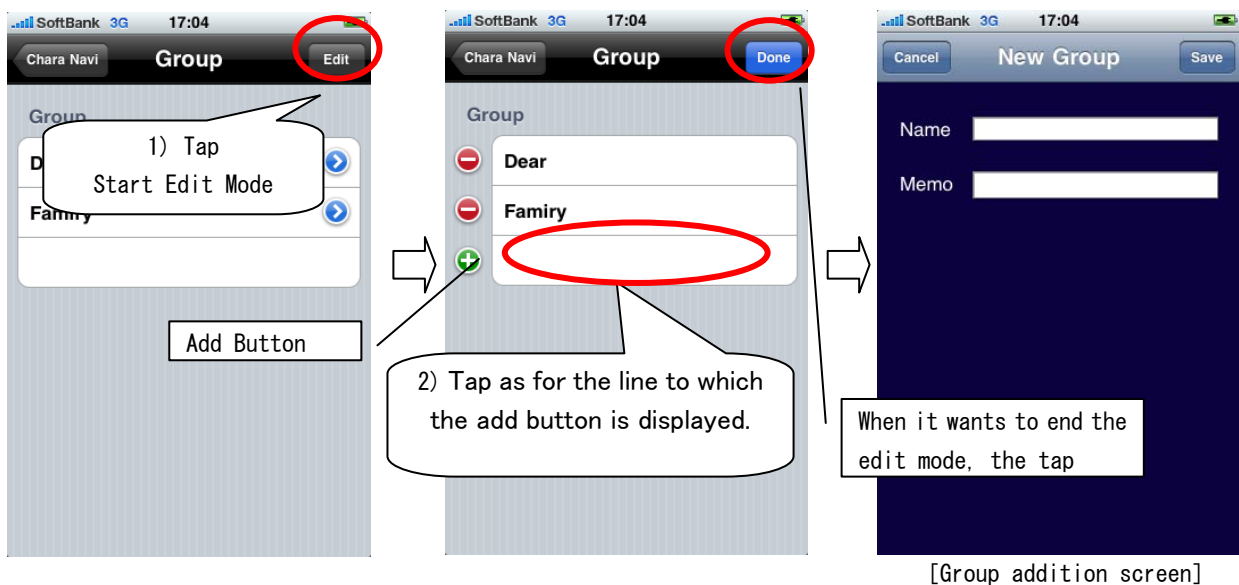
When the group that belongs User is deleted, the group of belonging User becomes it , saying that "unknown".

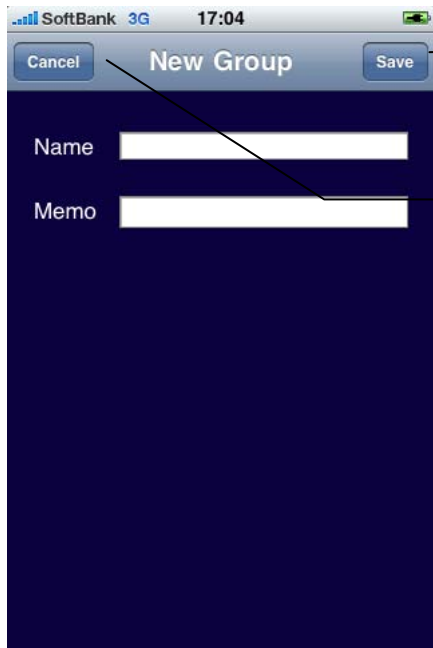


4-1. Register Group

It registers according to the following procedure of Group.

1. Tap [Edit]Button : The add button is displayed at the end of the list.
2. Tap as for the line to which the add button is displayed. : Group addition screen is displayed.





Save Button
The content of the input is preserved.

Cancel Button
Additional processing is canceled.

[Group addition screen]

Explanation of Each Item

Item	Explanation
Name	It is not omissible.
Memo	It is omissible.

4-2. Edit Group

When Group is edited, it does according to the following procedures.

1. Tap as for the line to which wanting the edited. : Group Edit screen is displayed.



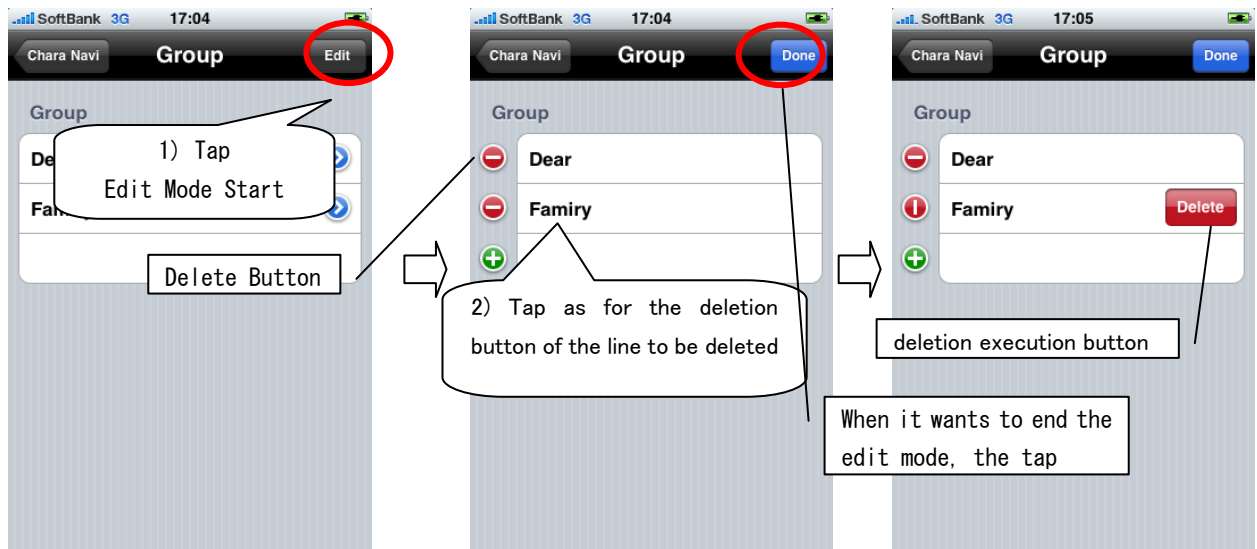
[Group edit screen]

4-3. Delete Group

It deletes it according to the following procedure of Group.

1. Tap [Edit Button] : The deletion button is displayed.
2. Tap as for the deletion button of the line to be deleted.:The deletion execution button is displayed.。
3. Tap The deletion execution button.

* When the group that belongs User is deleted, the group of belonging User becomes it , saying that "unknown".



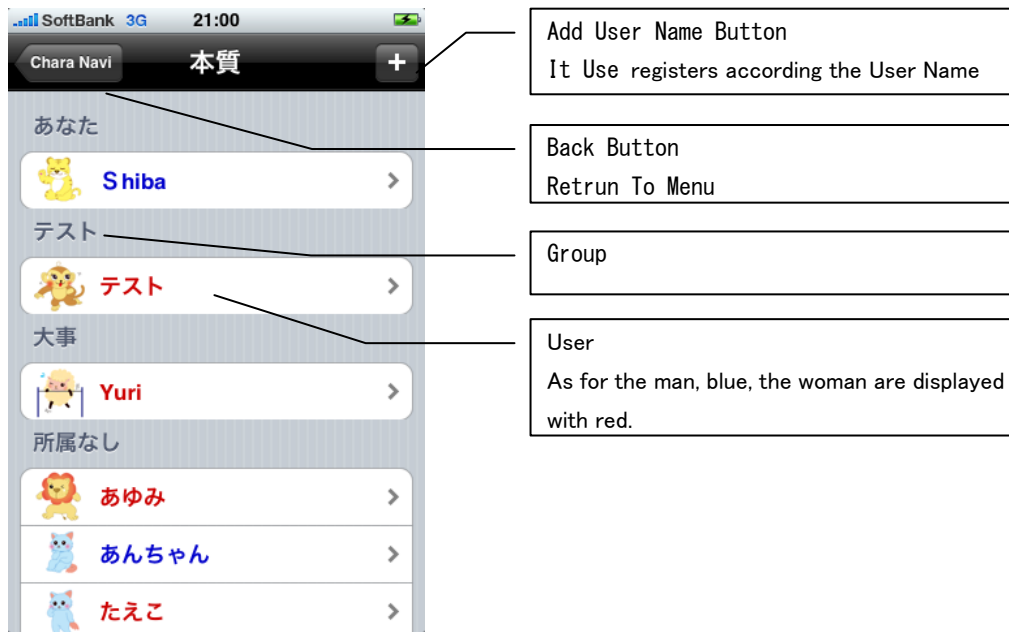
5. Core Nature

The essence that diagnosis person's animal character shows is displayed.

Action Bataan besides essence, the pattern of thinking, the psychology vector, and the rhythm are displayed.

Moreover, the rhythm graph is displayed.

* Light version, the rhythm graph cannot be displayed.



Core Nature is displayed according to the following procedure.

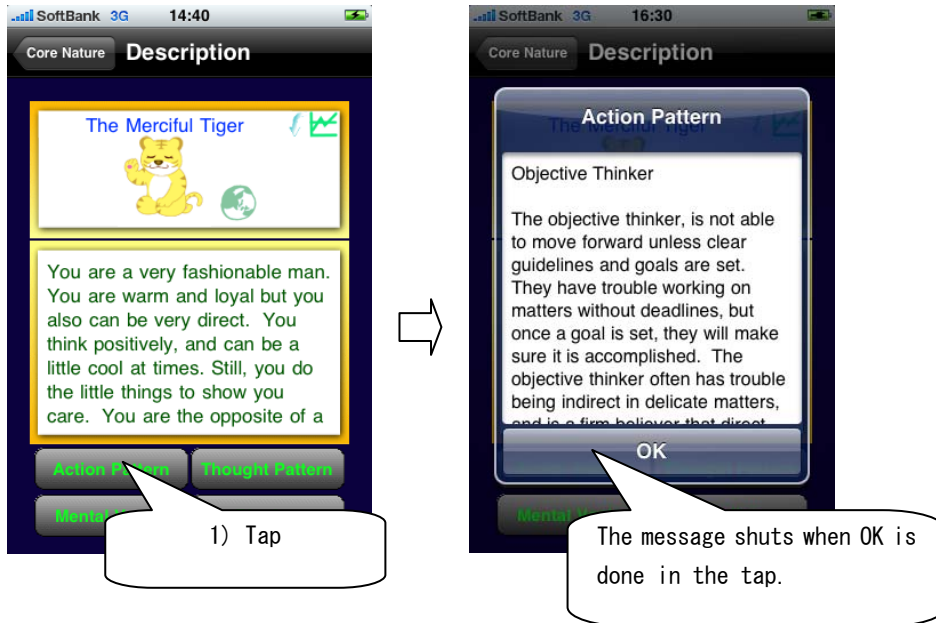
1. Tap from the list as for those who diagnose it by wanting the display of essence.

: Description Screen Displayed



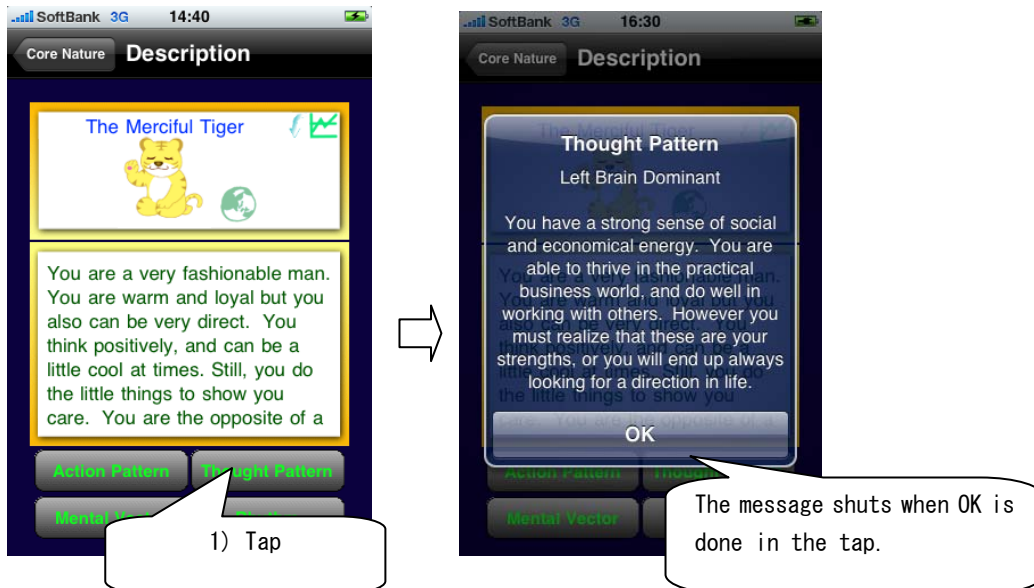
5-1. Display of Action Pattern

Tap Action Pattern Button. Action Pattern message is displayed.



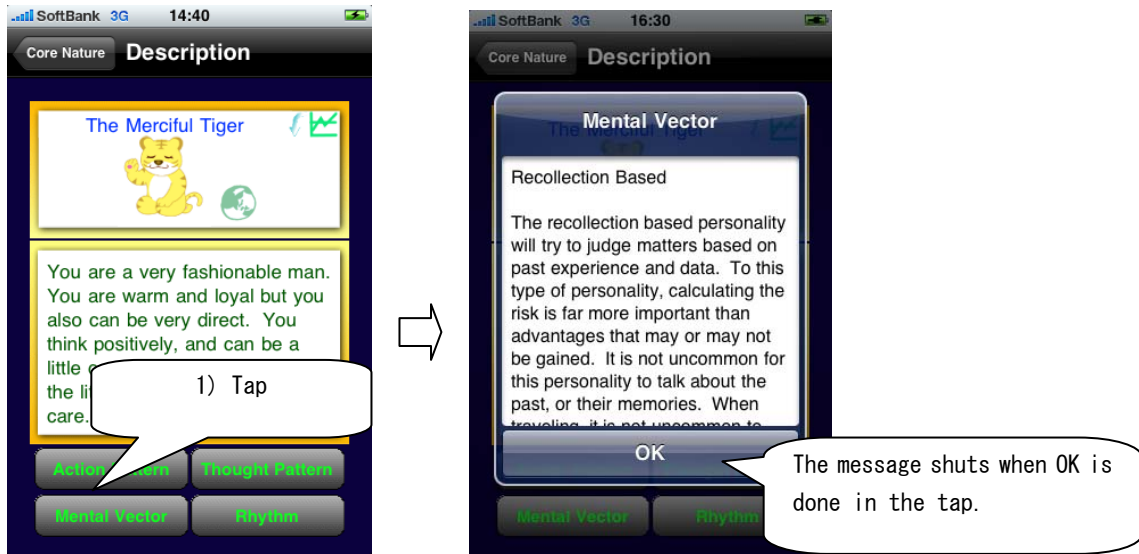
5-2. Display of Thought Pattern

Tap Thought Pattern Button. Thought Pattern message is displayed.



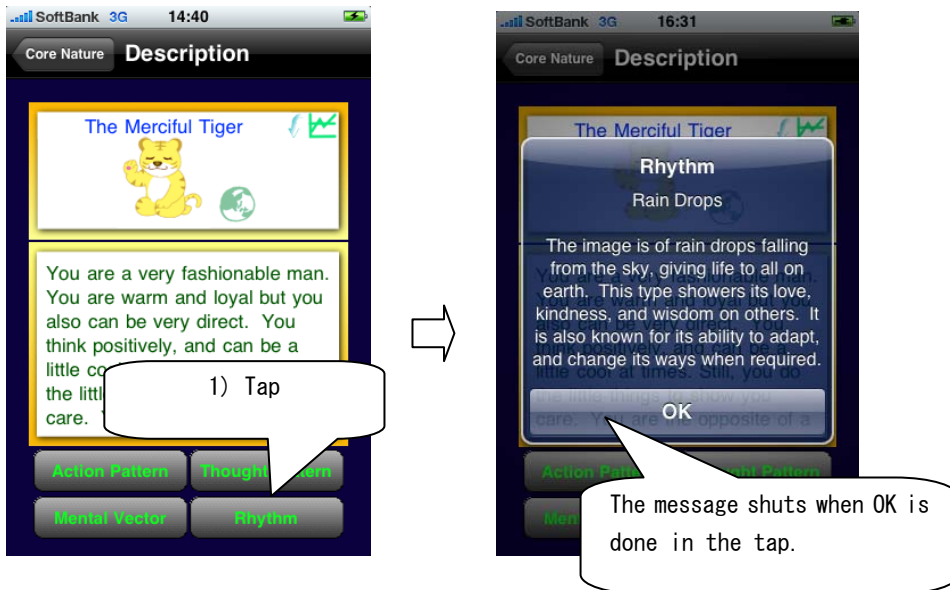
5-3. Display of Mental Vector

Tap Mental Vector Button. Mental Vector message is displayed.



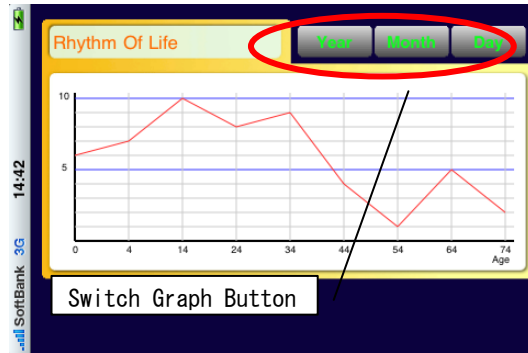
5-4. Display of Rhythm

Tap Rhythm Button. Rhythm message is displayed.



5-5. Display of Rhythm Graph

Rotate the Description Screen to the left by 90°. The Rhythm Graph is Displayed.



[Rhythm of Life]

In the graph, there are a rhythm of a life rhythm, the rhythm of the year, and the month and rhythms on the day. Switch the graph with the upper right graph switch button.

Rhythm of a life

The rhythm of each age is displayed.



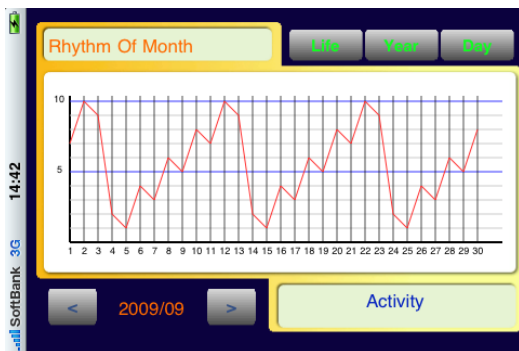
Rhythm of the Year

The rhythm of each month is displayed
It changes in year to be displayed.



Rhythm of the Month

The rhythm of each day is displayed
It changes in month to be displayed.



Rhythm of the Day

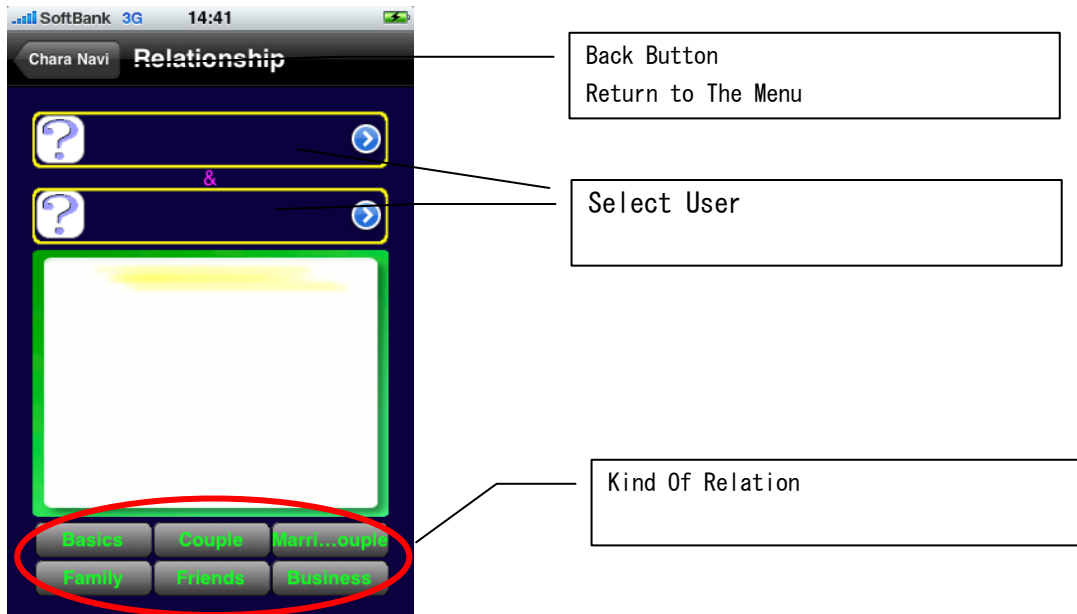
The rhythm of each hour is displayed
It changes in day to be displayed.



6. Relation Ship

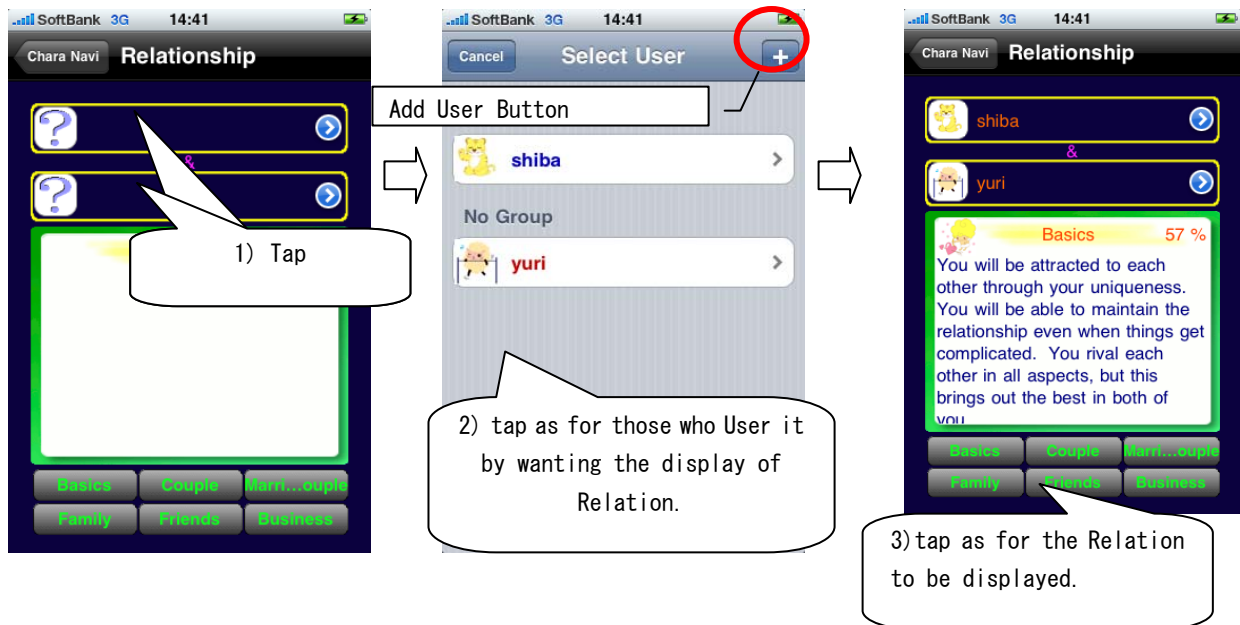
The compatibility between those who diagnose it is displayed.

Six kinds of compatibilities of the BASIC and Couple, Married Couple, Family, Friends, Business can be confirmed.



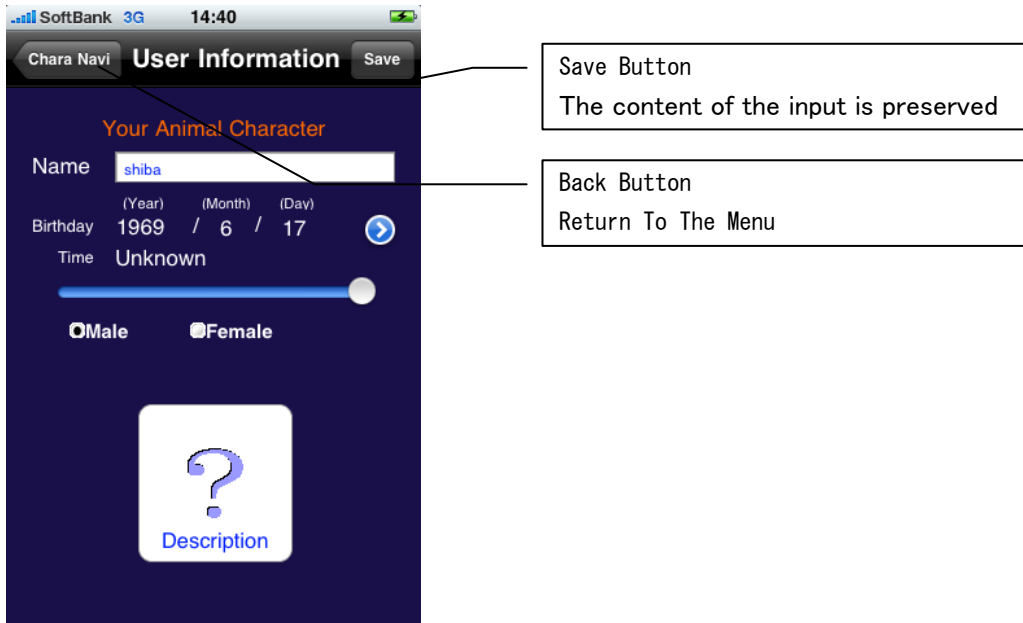
6-1. User Selection

Those who User it by the display of Relation are selected from the list.



7. User Information

It is Your information a registration screen.
The input content is used as User Name information.



The check condition of the input item is same as User Screen.

8. About

It is an information screen of Chara·Navi.
* In the Light version, the movement button to App Store is displayed.

